



Absolute Chess

Wesley Ted Brandhorst learned chess in high school (Class of 1951). In college he got into chess problem solving, problem composing and chess construction tasks



Ted Brandhorst

with some works published in the *British Chess Magazine*. He ventured casually into correspondence chess in 1975 with slow and steady improvement. He achieved his first IM norm in 2002 and by 2003 was awarded the ICCM title. A conservative player with a high percentage of draws and relatively few losses, Ted prefers the beauties of the endgame to the complexities of the opening and middlegame.

Ted has some suggestions for better correspondence chess: 1) Don't move faster than you are comfortable with facing a player who rushes his moves. 2) Always assume a player is better than his rating until he demonstrates otherwise. 3) If you are ahead in a game, keep your commentary to your opponent to a minimum, lest it look like gloating. 4) Some opponents are contentious. Keep to the basics to give them little to complain about. 5) Some opponents are friendly. Enjoy them and the friendships that can develop via correspondence chess.

Ted recently retired to Florida with his wife Jane and their dog Maggie, AKA "Magic Maggie," former frisbee dog champion. With more time to dedicate to chess, Ted has achieved his greatest success to date in the USCF Absolute Championships. In the 2001 Absolute tournament, Ted finished +3 -9 -0 which was good for a tie for 2-3rd. Now he has bettered that score with +5 -7 -0 in the 2002 Absolute, a score which cannot be tied or beaten. So, hail to you, Ted Brandhorst, the 2002 Absolute Champion!

GAME OF THE MONTH

Ted considers this game the key game of the tournament. His opponent is a player of great experience and tenacity. Concerned that the game might go over 100 moves, Ted was relieved when

Schakel decided the loss was inevitable and generously resigned.

DUTCH DEFENSE [A94]

W: IM Ted Brandhorst (2387)

B: IM Corky Schakel (2431)

2002 Absolute Championship

1 d4 f5 2 Nf3 e6 3 c4 Nf6 4 g3 Be7 5 Bg2 0-0 6 0-0 d5 7 b3 c6 8 Ba3 b6 9 Bxe7 Qxe7 10 Qc2 Nbd7 11 e3 Ba6 12 Rc1 c5 13 cxd5 Nxd5 14 Nc3 Nb4 15 Qd2 Rac8 16 Rd1 Nf6 17 Ne5 cxd4 18 exd4 Rfd8

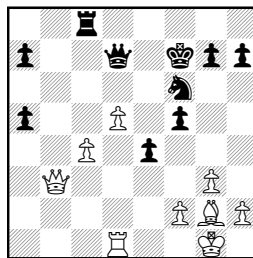
Black stands about even here.

19 a3 Nbd5 20 Nxd5 Nxd5 21 Re1 Qd6 22 Rac1 Rxc1 23 Qxc1 Rc8 24 Nc4 Qd7 25 Qc2 Nf6

White keeps a small edge after 25 ... b5 26 Ne5 Rxc2 27 Nxd7 Nc7 28 Nb8!

26 Qe2 Bxc4 27 bxc4 Kf8 28 Qd3 Rd8 29 Rd1 e5 30 d5 Kf7 31 Qb3 e4 32 a4 Rc8 33 a5 bxa5

(diagram)



after 33 ... bxa5

This is the position both players have been angling for. Are the white pawns strong or weak? If they can be stopped, Black will have the edge on both flanks. If not ...

34 d6 Qc6 35 c5+ Kg6 36 Rc1 a4 37 Qb4 a5 38 Qc4 Re8 39 Bf1 Nd7 40 Qb5 Rc8 41 Qxa5 Ra8 42 Qb5 Rc8 43 Rd1 Nxc5

Black's best chance to survive the pawns — but the ending is lost thanks to Brandhorst's patient technique.

44 d7 Nxd7 45 Rxd7 Qxb5 46 Bxb5 Ra8 47 Rd6+ Kf7 48 Bc4+ Ke7 49 Rb6 a3 50 Ba2 Ra7 51 Kf1 g6 52 h4 Kf8 53 Ke2 Kg7 54 Ke3 Kh6 55 Rb3 Kg7 56 Kf4 Kh6 57 Re3 Ra4 58 Rc3 Ra7 59 g4

Breaking up Black's kingside defenses leads to an ultimate victory.

59 ... fxc4 60 Kxg4 Kg7 61 Kf4 Kh6 62 Kg4 Kg7 63 Kg5 Ra5+ 64 Kf4 Rf5+ 65 Kg3 Ra5 66 Rc7+ Kh8 67 Rc4 Re5 68 Rc3 Ra5 69 Re3 Ra4 70 Kf4 Kg7 71 Rxe4 Ra7 72 Re3 Ra4+ 73 Kg3 Ra7 74 Kg4 h5+ 75 Kg3 Ra6 76 Re4 Ra7 77 Re6, Black resigns.

• If you find the bookkeeping of cc difficult or the chance for recording errors frustrating, you must try the ICCF Webserver www.iccf-webchess.com. It is definitely the future of correspondence chess. The webserver keeps track of the time for both players. The chance of a recording error is

almost impossible. You also can write messages to your opponent. In short, it's great! The USCF website should have a similar program. It is only a question of when.

• CC is similar to doing a research project as opposed to OTB which is akin to taking a test." —Robert Rizzo

• The grandmaster gives a lesson on how to steal a pawn and profit by it.

SICILIAN DEFENSE [B97]

W: SIM Heinz Prokopp (2451)

B: CGM Robin Smith (2610)

ICCF 2003

1 e4 c5 2 Nf3 d6 3 d4 cxd4 4 Nxd4 Nf6 5 Nc3 a6 6 Bg5 e6 7 f4 Qb6 8 Qd2 Qxb2 9 Rb1 Qa3 10 Be2 Nbd7 11 0-0 Qc5 12 Kh1 Be7 13 Rf3 b5 14 Re3 h6 15 Bxf6 Bxf6 16 Nb3 Qa7 17 Rd3 Be7 18 a4 b4 19 Na2 Nc5 20 Re3 Nxa4 21 Nxb4 Qb6 22 Ra1 Nc5 23 Qd4 0-0 24 Nd3 Rb8 25 Ndx5 dxc5 26 Qc3 Rd8 27 Rg3 Bf8 28 e5 Qb4 29 Qf3 Bb7 30 Qf1 Be4 31 Na5 Rd2 32 Rb3 Qd4 33 c3 Qd8 34 Rxb8 Qxb8 35 Nc4 Rc2 36 Rc1 Qb3 37 Qe1 Ra2 38 Ne3 Qb2 39 Bc4 Ra4 40 Bf1 c4 41 Rd1 Ra2, White resigns.

• Black's progress is maddeningly methodical as he slowly takes over the whole board in this French.

FRENCH DEFENSE (C18)

W: Robert Brooke (2120)

B: Ronald Ellis (2060)

16 USCCC 2002

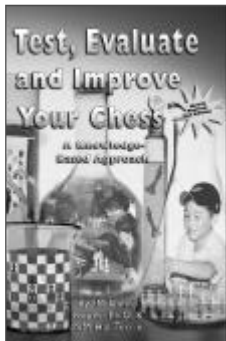
1 e4 e6 2 d4 d5 3 Nc3 Bb4 4 e5 c5 5 a3 Bxc3+ 6 bxc3 Qc7 7 Qg4 f6 8 Nf3 c4 9 Be2 Nc6 10 Qg3 Qf7 11 0-0 Qg6 12 Qxg6+ hxg6 13 Rb1 g5 14 h3 b6 15 Ne1 Bd7 16 f4 gxf4 17 Bxf4 Ke7 18 Nf3 Be8 19 Rbe1 Bg6 20 Bd1 Be4 21 Nd2 Bf5 22 Re3 Kd7 23 Rfe1 Re8 24 g4 Bg6 25 Kg2 Nh6 26 Bxh6 Rxh6 27 g5 fxc5 28 Rg3 Bf5 29 Nf3 g4 30 hxg4 Be4 31 Kf2 Bxf3 32 Rxf3 g5 33 Rf1 Ne7 34 Ke3 Ng6 35 Rf6 Rh3+ 36 Kd2 Nf4 37 Rf7+ Re7 38 Rf8 Rg7 39 Ra8 Kc6 40 a4 Kb7 41 Re8 Rh6 42 Kc1 Ka6 43 Kb2 Ka5 44 Ka3 Rgh7 45 Bf3 Rh3 46 Rg8 Rg3 47 Rxc5 Rhh3 48 Rg7 a6 49 Rf7 Rxf3 50 Rxf4 Rxc3+ 51 Kb2 Rcg3 52 R1f2 Kxa4 53 Rf6 c3+ 54 Ka2 Rh1 55 Rf1 Rxf1 56 Rxf1 Rxc4 57 Rf6 Rxd4 58 Rxe6 Rb4 59 Rd6 Rb2+ 60 Ka1 Rxc2 61 Rxb6 d4, White resigns.

• Fans of the sacrifice will enjoy this short fight.

SICILIAN DEFENSE [B96]
 W: A. Kerim Soley (2212)
 B: R. Kezesaj (2216)

IECG 2005

1 e4 c5 2 Nf3 d6 3 d4 cxd4 4
 Nxd4 Nf6 5 Nc3 a6 6 Bg5 e6 7 f4
 Qc7 8 Qf3 b5 9 Bd3 Be7 10 Bxf6
 Bxf6 11 e5 Bb7 12 Be4 dxe5 13
 Bxb7 exd4 14 Nxb5 axb5 15 Bxa8
 d3 16 c3 b4 17 0-0 bxc3 18 bxc3
 d2 19 f5 Qc5+ 20 Kh1 Qxc3 21
 Rad1 0-0 22 fxe6 fxe6 23 Qe2,
 Black resigns.



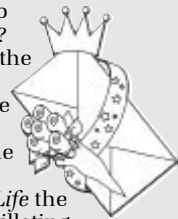
**IM Danny
 Kopec and
 NM Hal
 Terrie
 devise
 seventh
 skills test!**

The tests IM Danny Kopec devised along with Hal Terrie appear as quizzes in this book, designed to test your chess knowledge in specific areas, to evaluate your results, and to show you how to improve your game. The authors have added a seventh test to evaluate intermediate skills. FAN, 296 pages.

For individual sales, visit
www.USCFSales.com or call
 toll free 1-800-903-USCF (8723)
 For wholesale pricing, contact
joandubois@uschess.org or go
 to www.uschess.org

**POSTAL BEAUTY
 CONTEST**

Is it right that beauty is so often only its own reward? Surely not! And thanks to the generosity of Dr. Ronald Hames, the scales of justice have become more evenly balanced between how one wins and the hard fact of victory. For now in *Chess Life* the players who conduct scintillating games will receive the Hames Correspondence Game of the Year Awards. Resident postal editor Alex Dunne is the judge of a contest with prizes of \$100 for the best game by a master and \$100 for the best game by a non-master to appear in *Check* is in the Mail during a given year. What better reason, then, to send your postal brilliancies to Alex Dunne?



You are invited to send me your comments, questions and correspondence games (with or without annotation). Because of the volume of mail, submissions cannot be returned, and personal replies are not possible.

For Correspondence Chess game results, time complaints, vacation notices, etc., mail them to: Alex Dunne, PO Box 367, Sayre, PA 18840 or e-mail: alex.dunne@cqservices.com

For Correspondence Chess tournament entries, these **MUST** be mailed to: Joan DuBois, USCF, PO Box 3967, Crossville, TN 38557.

**CORRESPONDENCE CHESS
 TOURNAMENT UPDATES FOR JUNE 2005
 CONGRATULATIONS!**

TOURNAMENT WINNERS

JOHN COLLINS MEMORIAL CLASS

Jesus Carrasco	03CD71	6-0
Frank Spooner, Sr.	03CC28	5-1
Randy Crawford	03CC28	5-1
Philip Norman	03CC13	5-1

VICTOR PALCIAUSKAS PRIZE

Brian K. Stewart	03UM13	6-0
------------------	--------	-----

E-MAIL WINNER

SWIFT QUAD

Joe Hoffman	04SQ16	5½-½
-------------	--------	------

CHECK OUT USCF'S CORRESPONDENCE CHESS RATED EVENTS

USCF's 58th ANNUAL

2005 Open Correspondence Chess Golden Knights Championship
\$1,500 First Prize

(plus title of USCF's Golden Knights Champion and plaque)

• 2nd place \$800 • 3rd place \$600 • 4th place \$400 • 5th place \$200 • 6th thru 10th place \$100 each. **Entry fee: \$25.**

The entry deadline is November 30, 2005.

These USCF Correspondence Chess events are rated and open to all USCF members who reside on the North American continent, islands, or Hawaii, as well as those USCF members with an APO or FPO address. USCF members who reside outside of the North American continent are welcome to participate in e-mail events. Your USCF membership must remain current for the duration of the event, and entry fees must be paid in U.S. dollars. Those new to USCF Correspondence Chess, please estimate your strength: **Class A:** 1800-1999 (very strong); **Class B:** 1600-1799 (strong); **Class C:** 1400-1599 (intermediate); **Class D:** 1399 and below (beginner level). **Note:** Prize fund guaranteed (based on 400 entries) and will be increased or decreased proportionately per number of entries assigned.

CORRESPONDENCE CHESS MATCHES (TWO PLAYERS)

\$5 entry fee per person with two, four or six game options.

WIN A CORRESPONDENCE CHESS TROPHY

Four-player, double round-robin with class-level pairings. 1st-place winner receives a trophy. **Entry fee: \$10.**

VICTOR PALCIAUSKAS PRIZE TOURNAMENTS

Seven-player class-level pairings, one game with each of six opponents. Players must have a USCF CC rating to enter. 1st-place winner receives \$130 cash prize and a certificate signed by Victor Palciauskas. **Entry fee: \$25.**

JOHN W. COLLINS MEMORIAL CLASS TOURNAMENTS

Four-player, double round-robin with class-level pairings (unrateds welcome). 1st-place winner receives a John W. Collins certificate. **Entry fee: \$7.**

E-MAIL RATED EVENTS (NEED E-MAIL ACCESS):

LIGHTNING MATCH Two players with two, four or six game option. **Entry fee \$5 per person.**

Swift Quads Four-player, double round-robin format. 1st-place prize merchandise credit of \$30. **Entry fee: \$10.**

NEW!! Walter Muir e-Quads

Four-player, double round-robin e-mail format tournament with class-level pairings (unrateds welcome). 1st-place receives a certificate. **Entry fee: \$7.**

Express Tournament

Seven-player events, one game with each of six opponents. Prizes: 1st place \$30 merchandise credit, 2nd place \$20 credit. **Entry fee: \$15.**

USCF's 2nd ANNUAL

**2005 E-mail Correspondence Chess
 Electronic Knights Championship**

(Seven-player sections, one game with each of six opponents.)

\$1,500 First Prize

(plus title of USCF's Electronic Knights Champion and plaque)

• 2nd place \$800 • 3rd place \$600 • 4th place \$400 • 5th place \$200 • 6th thru 10th place \$100 each. **Entry fee: \$25.**

The entry deadline is November 30, 2005.

These USCF Correspondence Chess events are rated and open to all USCF members with e-mail access. Your USCF membership must remain current for the duration of the event, and entry fees must be paid in U.S. dollars. Maximum number of tournament entries allowed for the year for each player is ten.

Note: Prize fund guaranteed (based on 400 entries) and will be increased or decreased proportionately per number of entries assigned.

Please circle event(s) selected.

NOTE: Except for Lightning Matches, Swift Quads, Walter Muir e-Quads & Express Tournaments, players will use post office mail, unless opponents agree to use e-mail.

TO ENTER: 800-903-USCF (8723) OR FAX 931-787-1200

Name _____
 USCF ID# _____
 Address _____ City _____
 State _____ ZIP _____ Phone _____
 E-mail _____
 Credit card # (VISA, MC, Discover, AMEX) _____
 Exp. date _____ If using VISA, need V-code _____

Check here if you do not wish to have an opponent who is incarcerated.

Make checks payable to U.S. Chess and mail to:
 Joan DuBois, USCF, PO Box 3967, Crossville, TN 38557



U.S. Chess Federation
www.uschess.org