



A Winning Habit

ICCM David Novak scored a rare double by winning both the 1999 and 2001 Absolute Championship. Born in 1949, David has been a dominant force in recent Absolutes – finishing with a strong 7-5 in the 2002 event and standing at +1 (with many games remaining) in the current 2003 Championship. An attorney living in Vienna, Virginia, David lays the law down to Jan Koziol.



David Novak

GAME OF THE MONTH

White fights in the center, fights in the center some more, and fights even more in the center so that on Move 29 he can lash out on the furthest edge of the board.

RUY LOPEZ

W: David Novak (2418)
B: Jan Koziol (2343)

[C87]

Absolute, 2001

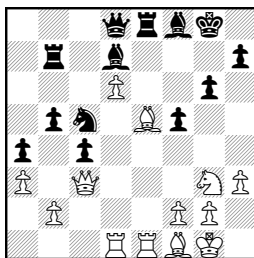
1 e4 e5 2 Nf3 Nc6 3 Bb5 a6 4 Ba4 Nf6 5 0-0 d6 6 c3 Be7 7 Re1 0-0 8 h3 Bd7 9 d3 b5 10 Bc2 Re8 11 Nbd2 Rb8

Cooper-Lecuyer, Cannes 2000 continued 11 ... Bf8 12 d4.

12 d4 exd4 13 cxd4 Nb4 14 Bb1 c5 15 d5 a5 16 a3 Na6 17 Nf1 Bf8 18 Ng3 g6 19 Bf4 a4 20 Qd2 Bc8 21 Bd3 Nd7 22 e5

White begins center action based on his better-placed minor pieces.

22 ... dxe5
23 Nxe5 Nxe5
24 Bxe5 Rb7
25 Bf1 f5 26
Rad1 Bd7 27
Qc3 c4 28 d6
Nc5? (diagram)



after 28 ... Nc5?

Black should have tried 28 ... Be6. Now White initiates a winning attack.

29 Nh5! gxh5 30 Qg3+ Kf7 31 Be2 Re6 32 Bxh5+ Rg6 33 Bd4 Ne6 34 Qf3 Nxd4 35 Qxb7 Ne6 36 Qd5 Qg5 37 Bxg6+ hxg6 38 Rxe6 Bxe6 39 Qb7+ Kg8 40 d7 Qd8 41 Qxb5 Kf7 42 Qxa4 g5 43 Qb5 Be7 44 a4 g4 45 hxg4 fxg4 46 a5 g3 47

fxg3 Qc7 48 Qh5+ Kg7 49 Qe8, Black resigns.

• From Tim Harding's *The Write Move* comes this poem from c. 1908-9. Postal players will enjoy it!

Correspondence Chess

*The mania for morphine and
the taste for alcohol
May overthrow a person and
his intellect enthrall,
But both are harmless habits rather
pleasant to possess,
Compared with the fell practice,
known as Correspondence Chess.*

*Just a bit pathetic is a man's
first postal card,
Which bears a modern challenge
to a friend who's "not too hard."
The unsuspecting tyro does not
dream of what a mess
He enters into by beginning
Correspondence Chess.*

*At first his interest is mild,
the opening is tame
But things get more exciting until
pretty soon the game
Appears before his eyes at night,
at meals, at business,
Until he thinks of little else than
Correspondence Chess.*

*For hours he struggles o'er the
board, his features drawn and pale
Then hurries off his cabalistic
cyphers to the mail,
The cooling night can bring no balm
to soothe his feverish stress,
For even sleep is racked
by thoughts of
Correspondence Chess.*

*In dreams he battles with great
knights on endless checkered lawns
Or falls beneath the feet of
myriads of pawns*

*Two bishops seated on his head
his breath almost suppress,
He starts awake but yet he broods on
Correspondence Chess.*

*If accidents or sickness should
impede my earthly road,
Misfortune bear upon me in
overwhelming load,
I'd bow my head before my fate and
humbly acquiesce
But I would pray to be preserved
from Correspondence Chess.*

—Robert Palmer Potter

• This is a story of two chess pieces – a black queen that finds an odd resting

place on h8 and a white pawn that wanders up the opposite side of the board to rest on the edge of queening.

KING'S INDIAN DEFENSE [E84]

W: IM Ted Brandhorst (2452)
B: Gilbert Drysdale (2427)

14 USCCC 2002

1 d4 Nf6 2 c4 g6 3 Nc3 Bg7 4 e4 d6 5 f3 0-0 6 Be3 Nc6 7 Nge2 a6 8 Qd2 Rb8 9 Nc1 e5 10 d5 Nd4 11 Nb3 Nxb3 12 axb3 c5 13 g4 h5 14 h3 Nh7 15 gxh5 Qh4+ 16 Qf2 Qxh5 17 Be2 Nf6 18 f4 Qh8 19 fxe5 Nd7 20 0-0-0 Nxe5 21 Bg5 b5 22 cxb5 f6 23 Bf4 Bh6 24 bxa6 f5 25 Qe3 Bxf4 26 Qxf4 fxe4 27 Qd2 Nf3 28 Qe3 Rxb3 29 h4 Bg4 30 Rdf1 Rfb8 31 a7 Ra8 32 Rhg1 Nng1 33 Bxg4 Nf3 34 Bxf3 exf3 35 Qe6+ Kg7 36 Qd7+ Kh6 37 Rxf3 Qd8 38 Qe6 Qe8 39 Rf7 Rb4 40 h5 Rg4 41 Re7 Rg1+ 42 Kd2 Rg2+ 43 Ke1 Qf8 44 Qe3+ Rg5 45 Re6 Qf5 46 Ne4 Kxh5 47 Re7, Black resigns.

• IM John Mousessian demonstrates the care and feeding of the initiative in this French gambit.

FRENCH DEFENSE [C13]

W: IM John Mousessian (2440)
B: Barry Noble (2258)

15 USCCC 2003

1 e4 e6 2 d4 d5 3 Nc3 Nf6 4 Bg5 Be7 5 e5 Nfd7 6 h4 Bxg5 7 hxg5 Qxg5 8 Nb5 Qd8 9 Qg4 g6 10 Nf3 a6 11 Nc3 c5 12 dxc5 Nc6 13 Qf4 h5 14 0-0-0 Qa5 15 g4 Qxc5 16 gxh5 Rxh5 17 Rxh5 gxh5 18 Be2 Qxf2 19 Rf1 Qc5 20 Ng5 Ndx5 21 Nxf7 Nxf7 22 Qxf7+ Kd8 23 Qg7 Ne7 24 Qf8+ Kd7 25 Bxh5 b6 26 Qe8+ Kd6 27 Qd8+ Kc6 28 Na4 Qe3+ 29 Kb1, Black resigns.

• Some players attack the kingside to win. Harry Simon shows the queenside is lots of fun, too!

SICILIAN DEFENSE [B38]

W: Harry Simon (1984)
B: A. Cacas (1964)

CCLA 2003

1 e4 c5 2 Nf3 Nc6 3 d4 cxd4 4 Nxd4 g6 5 c4 Bg7 6 Be3 Nf6 7 Nc3 0-0 8 Be2 d6 9 0-0 Bd7 10 Qd2 Rc8 11 Rac1 a6 12 Kh1 Nxd4 13 Bxd4 Bc6 14 f3 Qa5 15 Rfd1 Rf8 16 Rb1 Qc7 17 b4 Qb8 18 a4 Bd7 19 b5 axb5 20 cxb5 Be6 21 a5 Bc4 22 a6 bxa6 23 bxa6 Qa8 24 a7 Bxe2 25 Nxe2 Rc4 26 Qd3 Rc7 27 Rb5 Nd7 28 Bxg7 Kxg7 29 Ra1 Rec8 30 h4 Nc5 31 Qa3 Kg8 32 Ra5 Rb7 33 Nd4 Nd7 34 Rb5 Rcc7 35 Rxb7 Rxb7 36 Nc6 Nc5 37 Qa5 Rd7 38 Qb6 Nb7 39 Nb8, Black resigns.

**CORRESPONDENCE
CHESS TOURNAMENT
UPDATES FOR AUGUST 2005
CONGRATULATIONS!**

CANDIDATE MASTERS

| | |
|-----------------|------|
| John P. Swist | 2179 |
| David Long | 2003 |
| William Merrell | 2030 |

JOHN COLLINS MEMORIAL CLASS

| | | |
|--------------------|---------|-------|
| Joseph Daudish | 04CC24 | 5-1 |
| Frank Spooner, Sr. | 03CC37 | 5½-½ |
| Ken Miller | 03CC2 | 6-0 |
| Timothy Grassel | 03CC31 | 6-0 |
| John P. Swist | 04CM10 | 5½-½ |
| Susan Lamn | 02CD87 | 4½-1½ |
| John Smaltz, Jr. | 02CD87 | 4½-1½ |
| David Long | 03CAB12 | 5-1 |
| Z.L. King | 03CB50 | 6-0 |
| Robert E. Therrien | 04CM35 | 6-0 |
| Eric A. Price | 04CD14 | 6-0 |
| Frank Spooner, Sr. | 03CC40 | 5-1 |
| Blair Eakins, Jr. | 03CMA49 | 3½-2½ |
| Jack Maxfield | 04CM21 | 5-1 |
| Laurence Anderson | 04CM21 | 5-1 |

TROPHY QUAD

| | | |
|-----------------|--------|------|
| Joseph Daudish | 04QC15 | 6-0 |
| L.C. Gerecz | 03QB20 | 5½-½ |
| Victor Esquivel | 04QD25 | 6-0 |

E-MAIL

SWIFT QUAD

| | | |
|----------------|---------|-----|
| Ramon Colorado | 04SQ29 | 6-0 |
| Joe Hoffman | 05QCD05 | 5-1 |



CHANGE A CHILD'S LIFE

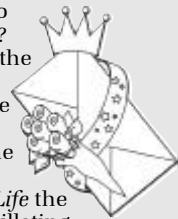
Include a bequest for the U.S. Chess Trust in your will. To do this, add this clause to your will: "I give to the U.S. Chess Trust, a charitable trust organized under the Laws of Massachusetts, PO Box 838, Walkill, NY 12589, the sum of \$_____ to be used for chess educational and charitable purposes."

If you already have a will, a short separate document (known as a "codicil") can add the bequest above. Your attorney can do this easily and should be consulted. Any such gift is deductible by your estate for U.S. estate and gift tax purposes.

You may get further information by calling: Barbara DeMaro at 845-527-1167.

**POSTAL BEAUTY
CONTEST**

Is it right that beauty is so often only its own reward? Surely not! And thanks to the generosity of Dr. Ronald Hames, the scales of justice have become more evenly balanced between how one wins and the hard fact of victory. For now in *Chess Life* the players who conduct scintillating games will receive the Hames Correspondence Game of the Year Awards. Resident postal editor Alex Dunne is the judge of a contest with prizes of \$100 for the best game by a master and \$100 for the best game by a non-master to appear in *Chess Life* during a given year. What better reason, then, to send your postal brilliancies to Alex Dunne?



You are invited to send me your comments, questions and correspondence games (with or without annotation). Because of the volume of mail, submissions cannot be returned, and personal replies are not possible.

For Correspondence Chess game results, time complaints, vacation notices, etc., mail them to: Alex Dunne, PO Box 367, Sayre, PA 18840 or e-mail: alex.dunne@cqservices.com

For Correspondence Chess tournament entries, these **MUST** be mailed to: Joan DuBois, USCF, PO Box 3967, Crossville, TN 38557.

CHECK OUT USCF'S CORRESPONDENCE CHESS RATED EVENTS

USCF's 58th ANNUAL

**2005 Open Correspondence Chess Golden Knights Championship
\$1,500 First Prize**

(plus title of USCF's Golden Knights Champion and plaque)

• 2nd place \$800 • 3rd place \$600 • 4th place \$400 • 5th place \$200 • 6th thru 10th place \$100 each. **Entry fee: \$25.**

The entry deadline is November 30, 2005.

These USCF Correspondence Chess events are rated and open to all USCF members who reside on the North American continent, islands, or Hawaii, as well as those USCF members with an APO or FPO address. USCF members who reside outside of the North American continent are welcome to participate in e-mail events. Your USCF membership must remain current for the duration of the event, and entry fees must be paid in U.S. dollars. Those new to USCF Correspondence Chess, please estimate your strength: **Class A:** 1800-1999 (very strong); **Class B:** 1600-1799 (strong); **Class C:** 1400-1599 (intermediate); **Class D:** 1399 and below (beginner level). **Note:** Prize fund guaranteed (based on 400 entries) and will be increased or decreased proportionately per number of entries assigned.

CORRESPONDENCE CHESS MATCHES (TWO PLAYERS)

\$5 entry fee per person with two, four or six game options.

WIN A CORRESPONDENCE CHESS TROPHY

Four-player, double round-robin with class-level pairings. 1st-place winner receives a trophy. **Entry fee: \$10.**

VICTOR PALCIAUSKAS PRIZE TOURNAMENTS

Seven-player class-level pairings, one game with each of six opponents. Players must have a USCF CC rating to enter. 1st-place winner receives \$130 cash prize and a certificate signed by Victor Palciauskas. **Entry fee: \$25.**

JOHN W. COLLINS MEMORIAL CLASS TOURNAMENTS

Four-player, double round-robin with class-level pairings (unrateds welcome). 1st-place winner receives a John W. Collins certificate. **Entry fee: \$7.**

E-MAIL RATED EVENTS (NEED E-MAIL ACCESS):

LIGHTNING MATCH Two players with two, four or six game option. **Entry fee \$5 per person.**

Swift Quads Four-player, double round-robin format. 1st-place prize merchandise credit of \$30. **Entry fee: \$10.**

NEW!! Walter Muir E-Quads

Four-player, double round-robin e-mail format tournament with class-level pairings (unrateds welcome). 1st-place receives a certificate. **Entry fee: \$7.**

Express Tournament

Seven-player events, one game with each of six opponents. Prizes: 1st place \$30 merchandise credit, 2nd place \$20 credit. **Entry fee: \$15.**

USCF's 2nd ANNUAL

**2005 E-mail Correspondence Chess
Electronic Knights Championship**

(Seven-player sections, one game with each of six opponents.)

\$1,500 First Prize

(plus title of USCF's Electronic Knights Champion and plaque)

• 2nd place \$800 • 3rd place \$600 • 4th place \$400 • 5th place \$200 • 6th thru 10th place \$100 each. **Entry fee: \$25.**

The entry deadline is November 30, 2005.

These USCF Correspondence Chess events are rated and open to all USCF members with e-mail access. Your USCF membership must remain current for the duration of the event, and entry fees must be paid in U.S. dollars. Maximum number of tournament entries allowed for the year for each player is ten.

Note: Prize fund guaranteed (based on 400 entries) and will be increased or decreased proportionately per number of entries assigned.

Please circle event(s) selected.

NOTE: Except for Lightning Matches, Swift Quads, Walter Muir E-Quads, Electronic Knights & Express Tournaments, players will use post office mail, unless opponents agree to use e-mail.

TO ENTER: 800-903-USCF (8723) OR FAX 931-787-1200

Name _____
 USCF ID# _____
 Address _____ City _____
 State _____ ZIP _____ Phone _____
 E-mail _____
 Credit card # (VISA, MC, Discover, AMEX) _____
 Exp. date _____ If using VISA, need V-code _____

Check here if you do not wish to have an opponent who is incarcerated.

Make checks payable to U.S. Chess and mail to:
 Joan DuBois, USCF, PO Box 3967, Crossville, TN 38557



U.S. Chess Federation
www.uschess.org

